



Internet In Motion

Keeping you connected

USER MANUAL

Series 1000 A

Part Number 91-007-01

Firmware Release 1.00

Table of Contents

[Table of Contents](#)

[Preface](#)

[1 Introduction](#)

[1.1 Theory Of Operation](#)

[1.2 Features](#)

[1.3 What Is In The Box](#)

[2 Connectors, Lights, Switches, and Jumpers](#)

[2.1 Switches](#)

[2.2 Connectors](#)

[2.3 Lights](#)

[3 Start Up](#)

[3.1 Power](#)

[3.2 Connecting The Antenna](#)

[3.3 Connecting to the Ethernet Port – Administrative Connection](#)

[4 Administration, Configuration and Status](#)

[4.1 Getting Started](#)

[4.2 Interfaces](#)

[4.3 Services](#)

[4.4 Status](#)

[5 Specifications](#)

[6 Certifications](#)



Preface

Welcome to the IIM Series 1000A Cellular Router User's Guide. The User's Guide will explain the basic operation of a Cellular Router and take you through the necessary settings to get your wireless application online. Additional information and applicable technical notices can be found at www.IIMproducts.com.

1 Introduction

Cellular Router provides application and network designers with a bridge between the world of IT infrastructure and the evolving wireless data networks. With Cellular Router the wireless transport is fully integrated into the product's routing fabric meaning that you can approach the setup and operation of this product much as with any other IP addressable device. Wireless considerations are reduced to the absolute minimum necessary to register and make connections on a network.

1.1 Theory Of Operation

The Series 1000A Cellular Router is a complete IP router that routes traffic over LAN Ethernet (10/100baseT) connections. The wireless features of Cellular Router simply extend the IP routing capabilities to include routing and network address translation (NAT) over CDMA2000/1XRTT wireless networks. As with most routers IIM's Series 1000A Cellular Router can be viewed as having a Local Area Network (LAN) side and a Wide Area Network (WAN) side. Traffic originating at Cellular Router's Ethernet ports is considered LAN traffic. The Wide Area Network connection is over the wireless network's 1XRTT transport.

1.2 Features

This manual covers Cellular Router (1000A) Release 1.00 and contains the following feature and functions.

1) Ethernet

- a. Static Addressing
- b. Dynamic (DHCP) Server
- c. DHCP Client
- d. Configurable DNS address
- e. Configurable Gateway, Sub net mask, and Broadcast address
- f. Port Forwarding
- g. Service management

2) CDMA Interface

- a. Enable/Disable Wireless Routing
- b. Enable/Disable inbound IP requests
- c. Adjust inactivity timers
- d. Name Server Interoperability with UDP or SMS
- e. DDNS Interoperability with BIND or MS Server
- f. Administration web server port address selection
- g. Enhanced OTA and manual activation
- h. Home Network Selection

3) Relay Contact Closure (detection and operation)

- a. NO/NC detection
- b. SMS or email cry out alarm

- 4) Relay Driver Output
 - a. SMS Activation
 - b. Web Activation

- 5) General Administration
 - a. Modify Password

- 6) Status – Ethernet Status
 - a. Currently Assigned IP Address
 - b. Current MAC Address

- 7) Status – CDMA Status
 - a. ESN (Serial Number) Hex and Decimal
 - b. Network Assigned IP Address
 - c. Telephone Number (MIN)
 - d. Current Network Status Active/Inactive
 - e. Signal Level (RSSI)

1.3 What Is In The Box

The following items are included with your Cellular Router

- 1) Series 4100 Cellular Router
- 2) Antenna
- 3) 12VDC Power adapter

4) Cross over Ethernet cable

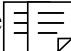
5) Documentation CD

2 Connectors, Lights, Switches, and Jumpers

2.1 Switches

Referring to Figure 1, there are two switches on the back of the Series 4100E. S1 (Reset) causes a hard reset of unit. S2 (Restore Defaults) is used to completely restore the firmware settings that were included when the product was shipped from the factory. To restore factory defaults, the unit must be running. Press the Restore Defaults (inner) switch and hold it down for 10 seconds. After 10 seconds, you will see both the green and yellow lights go off. At that time you may either press the reset (outer) switch or cycle power on the unit.



Figure 

2.2 Connectors

Ethernet Connectors

Connectors are found on the front of the Series 4100E Cellular Router . Ethernet ports 1 – 4 are auto polarity sensing and can be used with either a standard Ethernet cable or a reverse (cross over) Ethernet cable.

Terminal Block

Connector J1 supports three separate functions, power, relay contact closure detection and the relay driver output

The pin out configuration is as follows:

Pin 1 - +12VDC

Pin 2 - Ground

Pin 3 - Relay Out Control

Pin 4 - Relay Out Voltage Source 12vdc @40ma or less

Pin 5 - Relay In Sense

Pin 6 - Relay in Sense Voltage Source 3.3vdc with over current protection

Antenna Connector - Standard SMA type female connector.

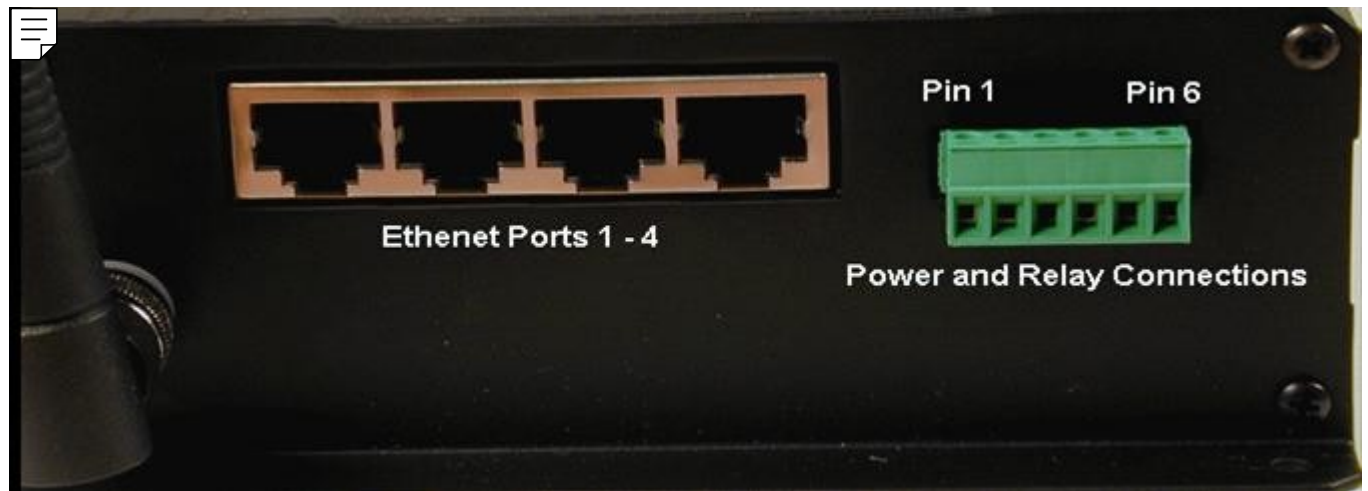



Figure 

2.3 Lights

The Series 1000A Cellular Router has indicators as shown in Figure 1.

The network status indicator should be interpreted as follows:

NO IP CONNECTION - When there is no connection, the led will be in the off state. If there is low signal (less than -88dBm) you will see one 200msc blink (on) every 4.5 seconds. if there is good signal quality, you will see two 200msc blinks (on) every 4.5 seconds.

IP CONNECTION - If there is a connection, the led will be in the on state. If there is low signal, you will see one 200msc blink (off) every 4.5 seconds. if there is good signal quality, you will see two 200msc blinks (off) every 4.5 seconds.

3 Start Up

Warning – You must connect an antenna to the SMA style antenna connector on the Cellular Router before turning it on. Failure to do this could result in erratic start up behavior and could possibly damage the unit.

3.1 Power

Before starting connect the supplied 12VDC power adapter to the power connector described in Section 3. The adapter supplied with your Cellular Router is suitable for use with 120VAC 60-hertz wall power. If you need a different power solution contact IIM.

3.2 Connecting The Antenna

The antenna supplied with each Cellular Router should be attached to the SMA style antenna connector described in section 3. The antenna must be connected before powering the unit on.

3.3 Connecting to the Ethernet Port – Administrative Connection

For a direct Ethernet connection between a PC connect to any of the Ethernet ports using a standard or reverse Ethernet cable. For initial configuration and administration with a PC or workstation IIM recommends that the PC be set to obtain an IP address and obtain a DNS address automatically. For Windows PCs make the following settings under the networking control panel

LAN (Ethernet) Connections - Windows

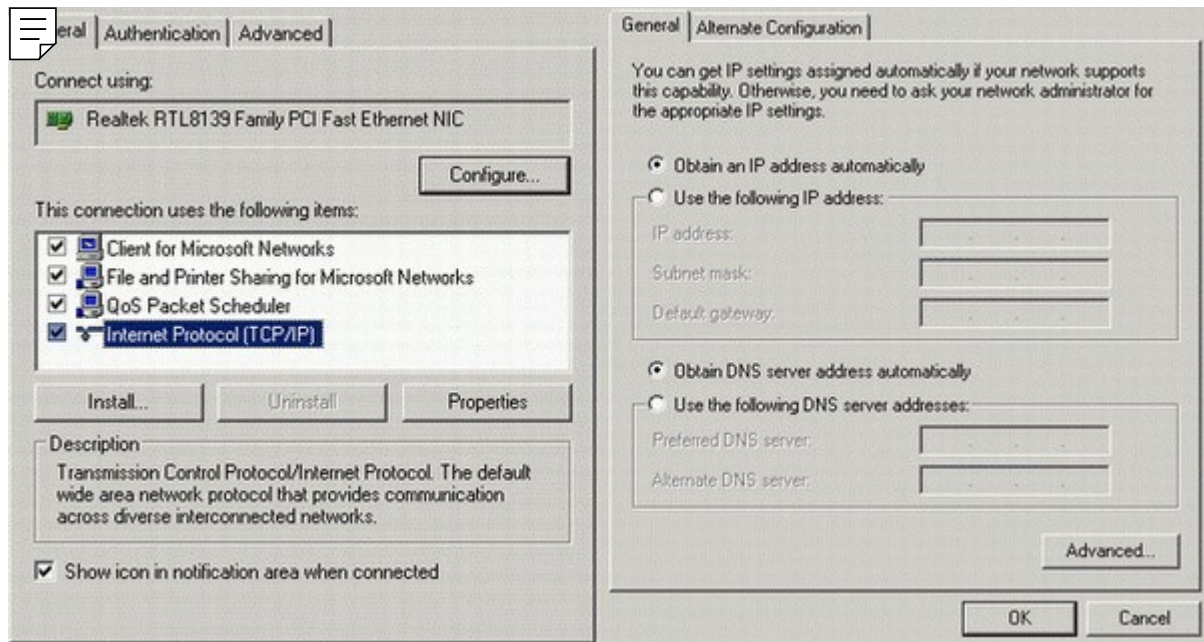



Figure 

4 Administration, Configuration and Status

About Addressing – Devices connecting to CDMA/1XRTT networks are assigned an IP address by the serving network. Address assignment may either be static or the unit will be dynamically assigned an IP addresses, depending on arrangements that you have made with your wireless network operator. Dynamically assigned IP address remain in effect for a period of time assigned by the network operator, usually at most a small number of hours.

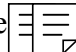
IIM's Cellular Router includes features that manage the temporal nature of dynamically assigned wireless IP addresses. Using the Wireless Configuration screen you can configure your Cellular Router to use a Dynamic DNS (DDNS) service. IIM operates a DDNS test bed that allows our customers to observe the performance and reliability of DDNS with their applications. For large-scale commercial applications IIM recommends that users configure their own DDNS, managed and maintained with the customers ongoing IT operations. Any Series 4100 Cellular Router can be configured to operate as a DDNS using IIM's proprietary Enhanced Wireless DNS (EW/UDP or EW/SMS). The Cellular Router may also be configured to operate with a standard DNS having Dynamic DNS capabilities. Examples of this type of service would be Berkeley Internet Name Daemon (BIND) and Microsoft Server 2000 and up. For detailed information see IIM's TechNote S4100-01.

Even if you elect to use a static IP address a DDNS service will add value in two ways. First, when the networks static addressing assignment fails there is a mandatory waiting period before the endpoint is allowed to reinitiate the request for a static address registration. During this period of time the network will dynamically assign addresses to the end point. A DDNS service will make the end point network addressable (by name) during this period of time. Secondly, a name service allows your end point to be known by a name that is independent of network addressing. Addressing a unit by name may be easier for end users to remember and will, over a long period of time, reduce maintenance problems.

4.1 Getting Started

Once the PC has been set up properly and physically connected to the Cellular Router you are ready to begin configuring the Series 4100 Cellular Router for your application. To access the Administration menu use a conventional web browser pointed at <http://192.168.1.10>. A login screen appears as shown below. The default User ID is “ctek” (without the quotes) and the default Password is also “ctek”. Be sure to change the user ID and password and record your new selections.



Figure 

When you have completed the login process you will be presented with the top-level administration menu.

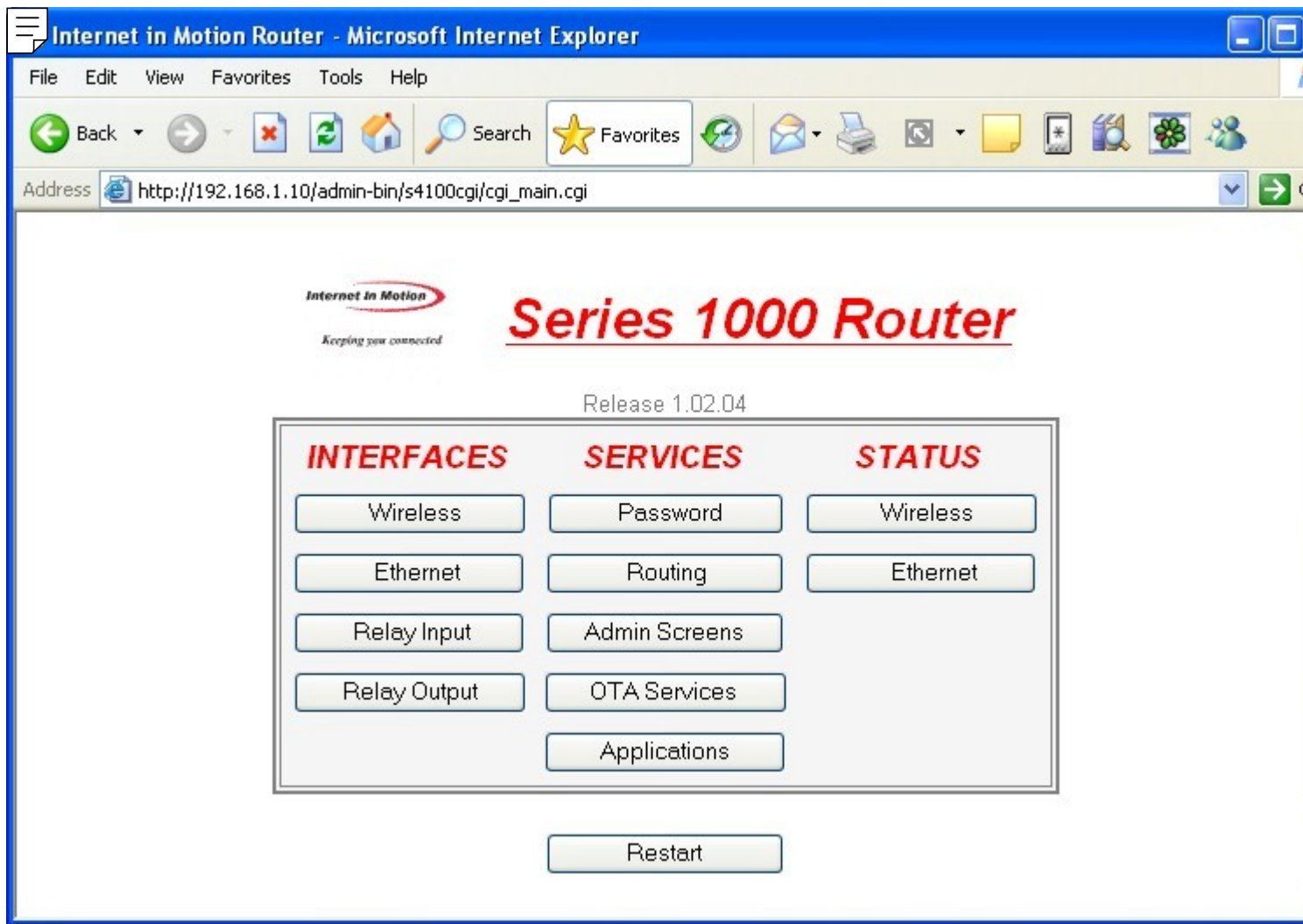
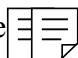


Figure 

Note that the administration menu is divided into three sections. The Interfaces section deals with physical connectivity, managing the connection and subtended devices. Services are applications that are within the router core to modify the behavior of a specific interface or to change system wide parameters within the router core. Status screens are provided for the CDMA2000/1XRTT and Ethernet interfaces.

Note – The Restart button **must** be used to apply any changes made on specific Interface or Service screens.

4.2 Interfaces

4.2.1 Configuring The Wireless Interface

The configuration screen for the wireless interface is shown below. The actual wireless interface is provisioned and configured by the wireless Network Operator. Cellular Router 's Wireless Interface Configuration screen is used to establish inactivity timeouts and Name Server selections.

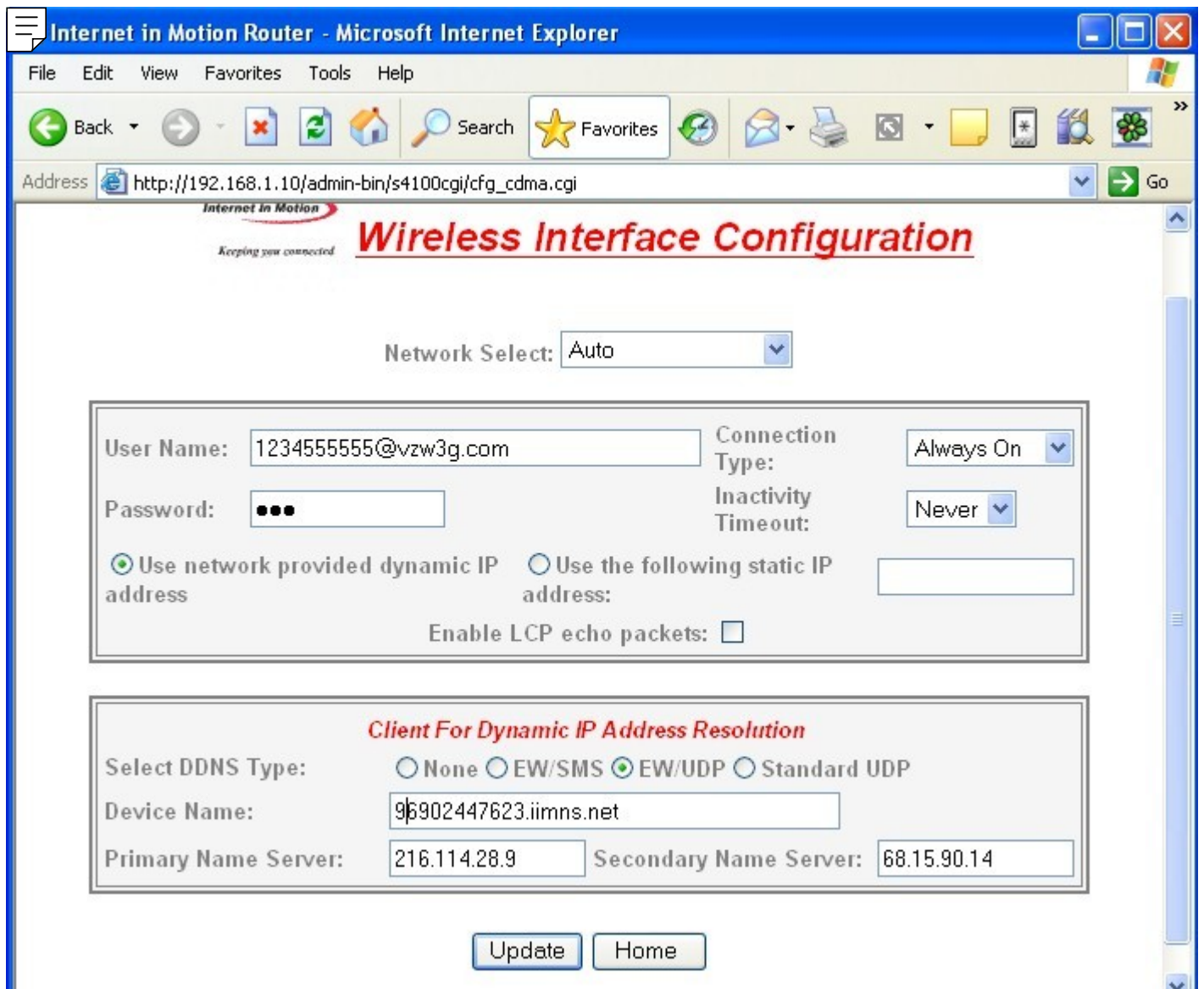
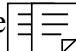


Figure 

Network Select – This pull down menu allows the user to control the home network setting of the CDMA connection, effectively limiting the scope of the Preferred Roaming List (PRL) assigned by your wireless network operator. There are four possible settings:

- 1) **Auto** – Auto is the standard mode of operation and should continue to be used in most cases. In the Auto mode of network selection the entire PRL is considered for serving network connections.
- 2) **Home Only** – In Home Only mode serving network connection choices are limited to those defined as Home in the PRL.
- 3) **PCS Home Only** – In PCS Home Only mode serving network connection choices are limited to those PCS (1900MHz) defined as Home in the PRL.
- 4) **Cellular Home Only** - In Cellular Home Only mode serving network connection choices are limited

to those Cellular (800MHz) defined as Home in the PRL.

Warning – If the Series 4100 Cellular Router is transported from one location to another Network Selection choices other than Auto could cause the unit to fail to make a network connection. For instance, if the Network Selection mode was set to PCS Home Only and the unit was transported to a location not served by PCS, or an area where the PCS network was not included in the PRL, the connection would fail.

IIM recommends that Auto mode should always be used unless problems are detected. If selections other than Auto are required the user should then evaluate operation in Home Only. Network technology specific choices (PCS Home Only and Cellular Home Only) should only be used as a last resort.

User Name and Password – Required for activation on some networks. See TechNotes for specific usage.

Connection Type – Used to manage conditions under which a wireless WAN connection will be made.

Disabled – Never connect to the wireless network

On Demand – Only connect when there is outbound traffic to route

Always On – Cellular Router remains connected to the wireless network independent of whether there is outbound traffic or not. In this mode Cellular Router will automatically reconnect to the network if disconnected or if its IP lease expires

Connection Inactivity Timeout – When operating in On Demand mode, this timeout parameter defines the length of time that the Cellular Router will remain connected to the wireless network. If your Wireless Network Operator has a shorter timer it will take precedence over this setting.

Use Network's Dynamic IP Address – For most networks this will be the correct selection.

Use The Following Static IP Address – If your selected network is capable of provisioning a static IP address to your application check this box and enter the assigned IP address. See TechNotes for network specific set up.

Enable LCP packets in static IP mode – Cellular Router uses LCP packets as a heart-beat mechanism to

determine the state of the network provided PPP connection. Some networks will not support this when a static IP address is used. If this feature is available on your network it will enhance the reliability of session oriented communications such as telnet to the TCP PAD function.

Select DNS Type – Used to select the appropriate protocol for your Dynamic DNS.

- 1) **None** – DDNS will not be used.
- 2) **EW/SMS** – Use IIM Enhanced Wireless DDNS with SMS updates.
- 3) **EW/UDP** - Use IIM Enhanced Wireless DDNS with UDP updates over the 1XRTT Air Interface
- 4) **Standard UDP** – Use a standard BIND, MS2000, or MS2003 DDNS server

Device Name – Establishes the name by which this particular Cellular Router will be known at the Name Server. This entry must be a fully qualified device name and domain and is limited to 40 characters in total. It is limited to one level of name space definition meaning that all characters to the right of the first “dot” will be assumed to be a component of the resolving server. An example would be *IIM01.thingme.net* where *IIM01* is the name of an individual Cellular Router and *thingme.net* is the name of the resolving server.

Primary and Secondary Name Server – Enter either phone number (SMS updates) or the IP address of the designated Name Server. Name resolution is not performed on this entry meaning that a numeric IP address of the resolving server is required.

Provide Network Name Server Facilities – Selecting Yes causes this Cellular Router to provide Name Server services to client Cellular Router s configured to use it. If this option is selected additional set up in the Name Services screen will be required.

4.2.2 Configuring The Ethernet Interace

The Ethernet configuration determines how devices connected to the LAN side of Cellular Router will be addressed, and what the actual address of this Cellular Router will be on the LAN.

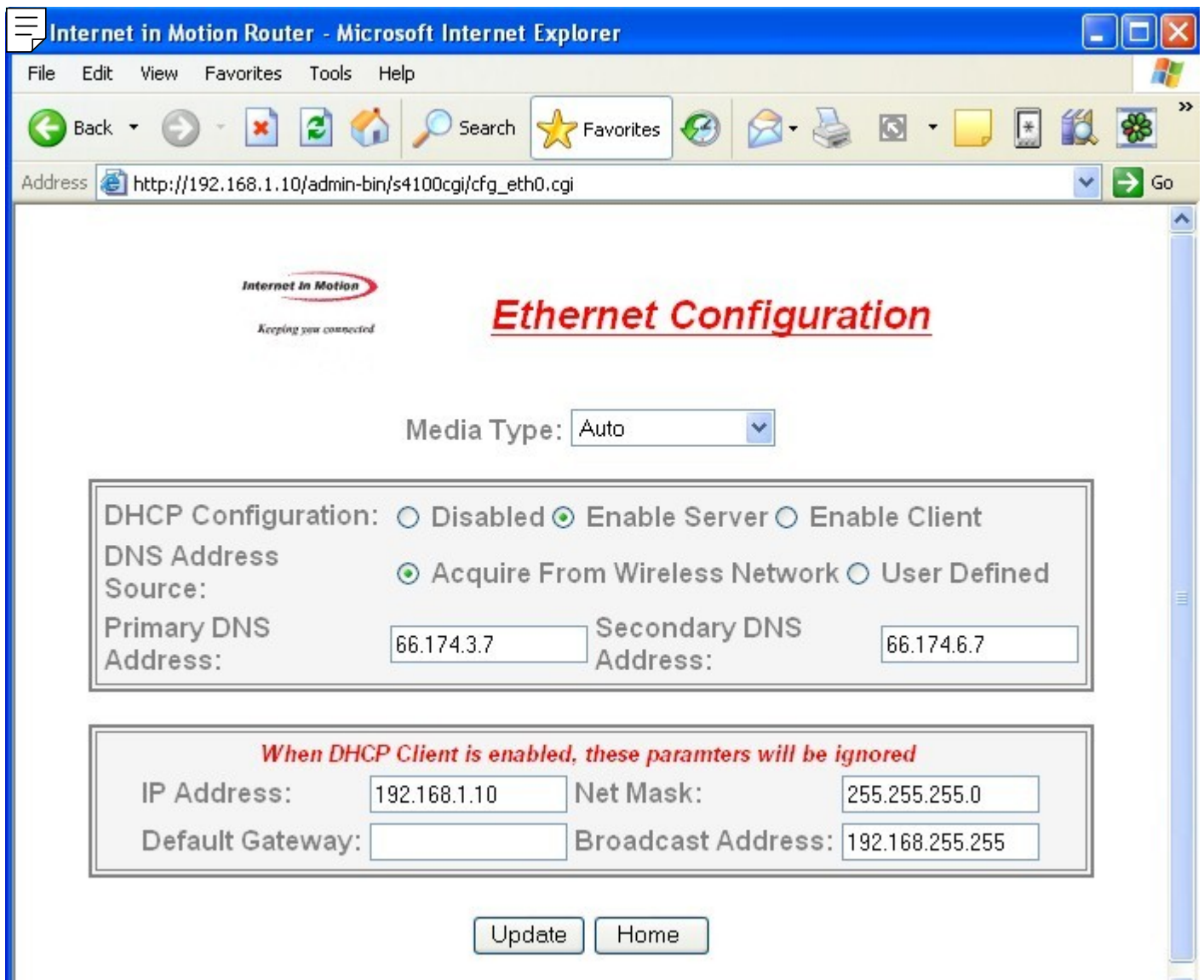
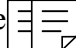


Figure 

Media Type – Determines the type of Ethernet connection. Auto allows Cellular Router to determine what the connection is. This setting is appropriate for most cases. Other settings are to select either 10Mb (10baseT), 100Mb (100baseT), Full Duplex (FD), or Half Duplex (HD). Again, in almost all cases Auto will correctly determine the proper setting.

DHCP Configuration – These settings determine the network topology of the LAN side of Cellular Router's network.

Disabled – You must manually configure the IP address and other addressing parameters described in the next section. It is recommended that the Cellular Router be assigned a private static address of

192.168.1.10.

Enable Server - This Cellular Router must be assigned a private static IP address, as defined in the next section. It is recommended that an address of 192.168.1.10 be used. The DHCP server will issue dynamic IP addresses to other devices connected to the LAN side. IP addresses will be assigned for up to 50 devices. Address assignment is sequential in the range of 192.168.1.100 – 192.168.1.150.

Enable Client – Some other device on the LAN side of the network is acting as a DHCP server. Cellular Router will be assigned a dynamic IP address by the DHCP server.

DNS Address Source – In most cases this parameter should be set to Acquire From Wireless Network. In this case, when you click on the Update button, the Cellular Router will verify that it has been connected to the wireless network and that the wireless network has provided DNS addresses. If DNS addresses have been provided, they will be displayed in the Primary and Secondary Address boxes. If addresses have not been provided, you will receive an error indication. At that point, you should allow the Cellular Router to establish a connection with the wireless network so that it can acquire the DNS addresses. You should then go back into the Ethernet Configuration screen and click on submit again. At this point, the DNS addresses should appear.

If your application requires a specific DNS setting check the User Defined box and manually fill in the DNS IP Address fields below.

DNS IP Address (Primary and Secondary) – The address of the Domain Name Server that your network uses. This should not be confused with the Name Server entries on the Wireless Interface screen. The DNS referenced by these addresses will resolve outbound queries.

IP Address – The IP address assigned to the LAN segment of this Cellular Router .

NetMask – This parameter is also known as Subnet Mask. Network Mask determines which portion of an IP address is the network portion and which portion belongs to the host. As an example a setting of 255.255.255.0 would indicate that the first three groups of this address (255.255.255) identify the network and that the last group (000 – 254) identify a particular host.

Default Gateway – The Default Gateway is the address of a device that Cellular Router will use to reach

remote networks or servers. In many cases this will be a firewall address. In a normal situation where the 4100 is acting as a fringe router and is expected to pass incoming Ethernet traffic through to the CDMA network, this field should be left blank. If the 4100 is acting as a RAS where traffic is coming in from the CDMA network so that it can be routed through to some sort of host/server, this field must set to the address of the 4100's Ethernet port.

Broadcast Address

If applications on the 4100 need to do a broadcast operation, this is the address that will be used on the Ethernet segment to fulfill the broadcast request.

4.2.3 Configuring The Relay Input Interface

This screen configures the connection characteristics of the relay input interface and defines the service associated with this interface. Currently, the relay interface can cause an SMS message to be sent to another wireless device or an e-mail message to be sent to any valid email address.

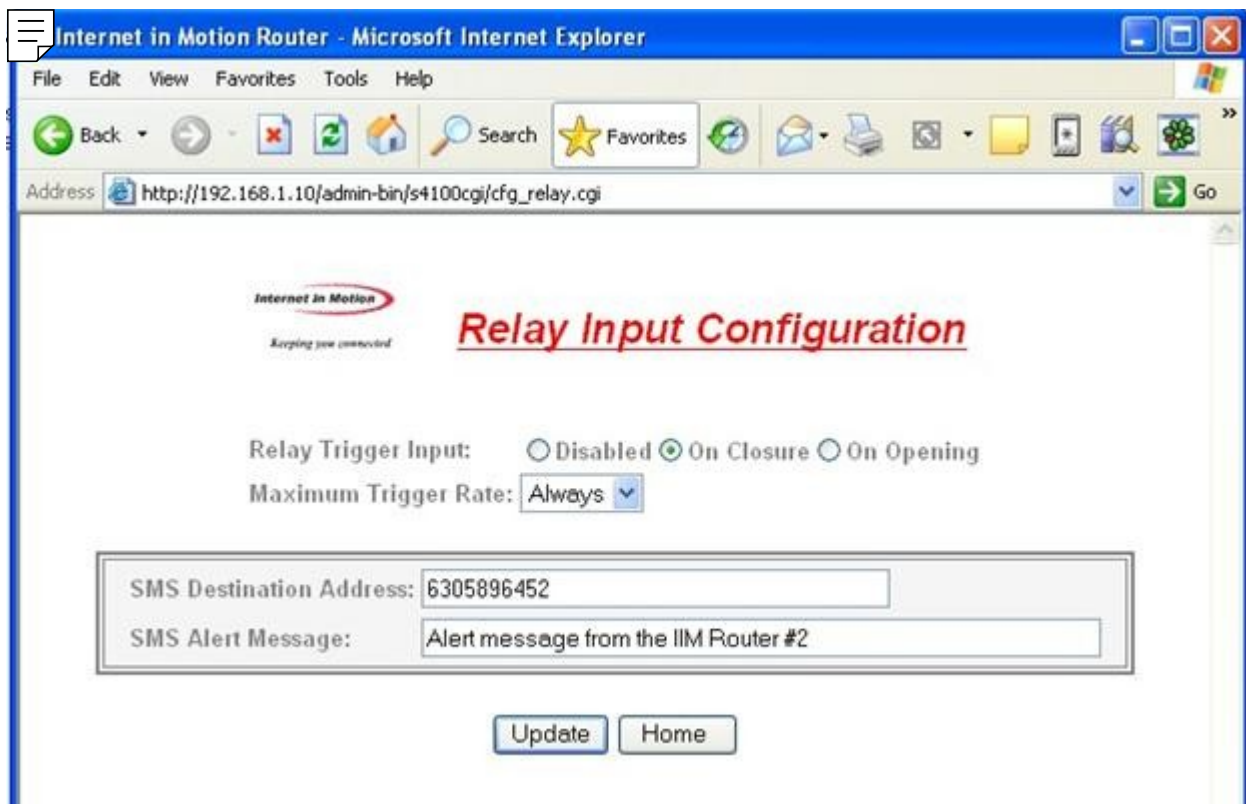
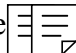


Figure 

Relay Input Trigger – Establishes the conditions under which the Relay Service will be invoked. Unless it is disabled the relay input is sampled at 1000 millisecond (1 second) intervals.

Disabled – Never respond to relay activity

On Closure – Respond when relay contacts go closed

On Opening - Respond when relay contacts go open

Maximum Trigger Rate – This setting determines how often the Cellular Router will send a “relay event” message. If the relay event is recurring at a rapid rate this setting will prevent an undesirable “flood” of messages. If **Maximum Trigger Rate** is set to "**Always**" the relay input is operating in edge triggered mode. In this mode the Cellular Router will invoke its assigned service any time that the input transitions to the selected state. So if **ON CLOSURE** is selected an SMS is sent every time that the contacts close. This means that once closure is sensed there can be no other closure event until the contacts are first sensed to be open.

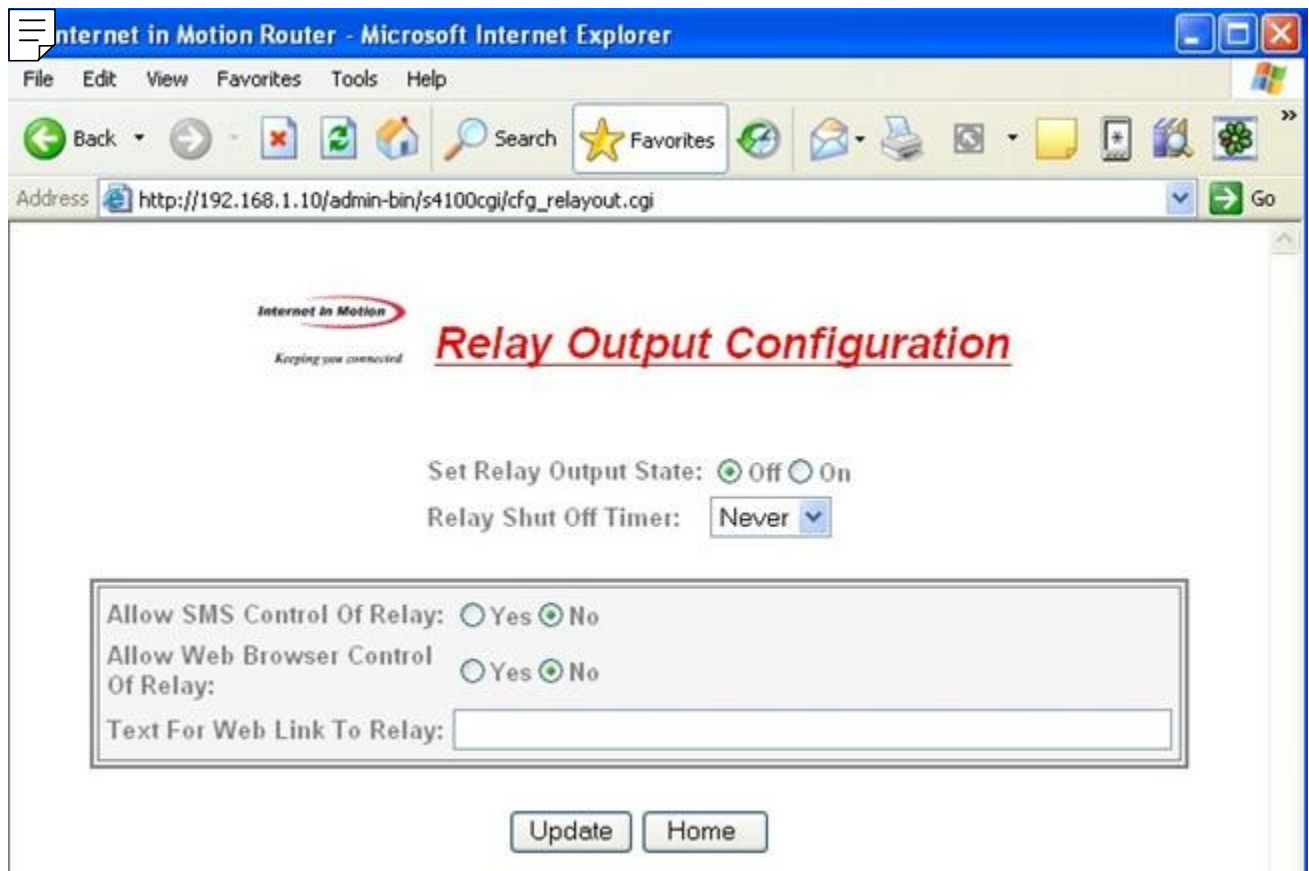
All other modes where Max Trigger Rate has a time value are level sensitive. So if the contacts close an SMS is sent and then the state of the relay input is ignored for a defined period of time. For instance, if **Max Trigger Rate** is set to **5 minutes** an SMS is sent and then the relay input is sampled again in 5 minutes. If the contacts are still closed another SMS is sent. If the relay input is not closed Cellular Router reverts to monitoring the relay every second.

SMS Destination Address – The MIN (mobile phone number) or email address to which the SMS message will be sent. MIN must be 10 numeric characters with no spaces or punctuation. Any email address in the form *Anything@Any_Domain* will be accepted.

SMS Alert Message – The text of the message to be sent when the relay interface activates. Limited to 100 characters maximum. Only printable ASCII characters in the range of 32 – 126 decimal (20 – 7E hex) can be included in the message.

4.2.4 Configuring The Relay Output (Driver) Interface

This screen configures the connection characteristics of the relay output interface and defines the service associated with this interface. Currently, the relay output interface can be activated by an SMS message or from a button that can be defined on the Advertising screen described in the Services section.



Set Relay Output State – Defines the default state of the relay driver circuit.

Relay Shut Off Timer – The relay driver circuit will revert to its default setting after the number of seconds specified by this parameter.

Allow SMS Control of Relay – If Yes is checked the relay driver may be activated by sending an SMS with the command “R1” and deactivated by sending an SMS with the command of “R0”.

Allow Web Browser Control of Relay – If set to yes a button will appear on the Advertising screen to enable and disable the relay driver circuit.

Text For Web Link To Relay – This text will appear on the advertising screen next to the relay activation button.

4.3 Services

4.3.1 Password Administration

Used to change passwords and create users. Be sure to record this information in a secure location.



Figure 

4.3.2 Routing and Forwarding Services

The Routing and Forwarding Services screen provides two separate but related functions. First it allows you to forward WAN side IP traffic arriving on a specific IP Port to a specific Port at a LAN side address. In addition to this conventional forwarding feature this screen also allows you to make a Named Service

publicly available over the WAN interface. In

Figure 14 below WAN side UDP and TCP traffic arriving on Port 88 is redirected to Port 80 of LAN address 192.168.1.102.

The second function performed by this set up screen to allow named services to be made publicly available to WAN side users. Referring again to Figure 14 a service named Camera #1 will be advertised or made publicly available. Security for this advertised service is left up to the specific service. If the Advertising feature is used the Administrative Login screen will no longer greet incoming WAN users, instead they will be presented with a Services screen as shown in Figure 15.

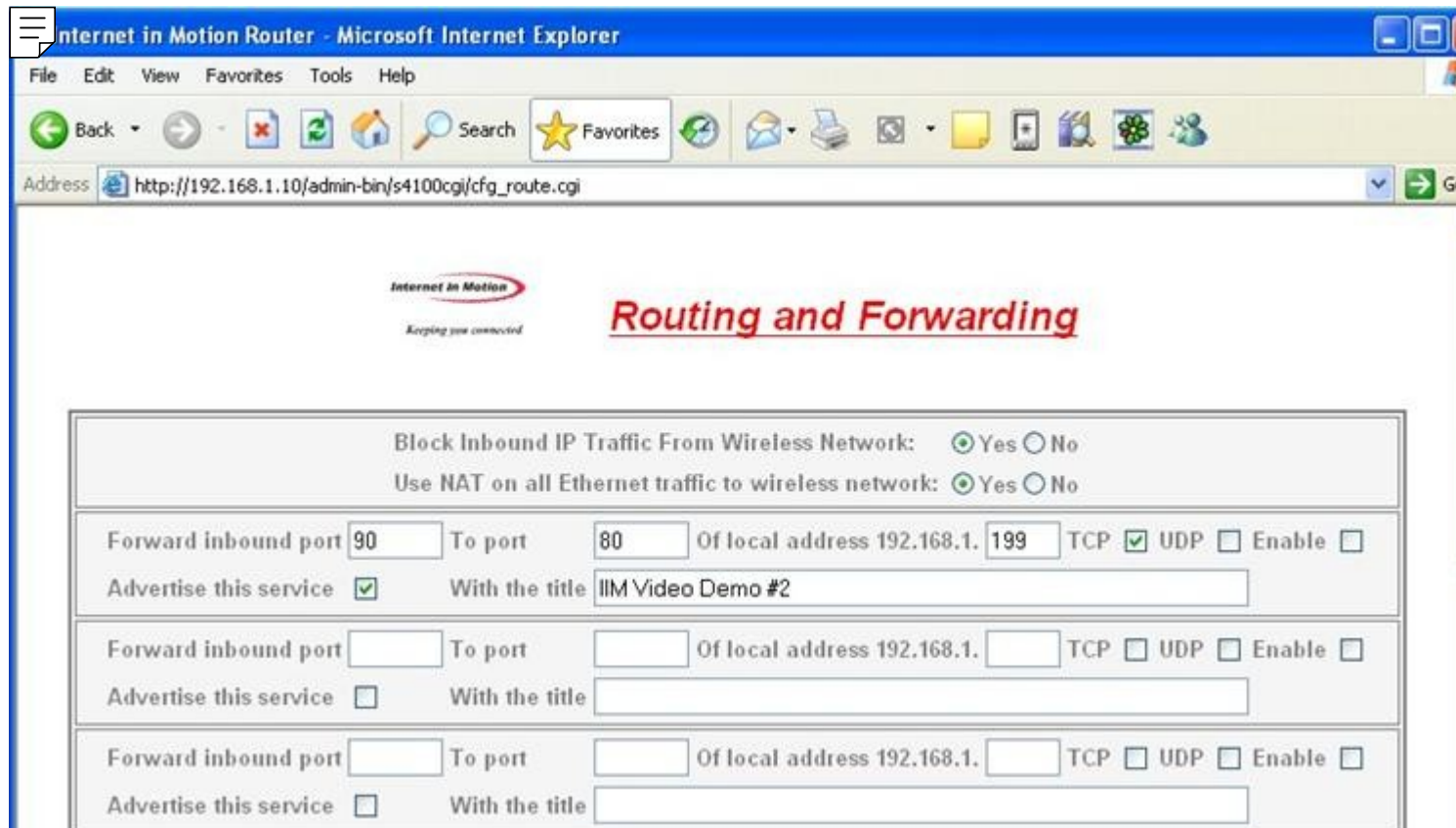
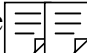


Figure 

Block Inbound IP Traffic From Wireless Network – If set to Yes the Cellular Router 's firewall is configured to block any inbound originated (but not response) packets from the wireless network (WAN). This firewall is then selectively modified by the forwarding entries defined through this screen. If this parameter is set to No, the Cellular Router 's firewall is disabled.

Use NAT on all Ethernet traffic to wireless network – For normal operation this parameter should be set

to “**Yes**”. In some unique situations, you may connect the Cellular Router to a network where you will be given public address to use on your LAN’s Ethernet segment. In such cases, NAT should be turned off. NAT is currently required for operation on all US networks such as Sprint, Verizon or Alltel. Typical environments where NAT would be turned off would be private networks or some types of VPNs and in these cases, the network operator will most likely provide configuration assistance.

Forward Inbound Port – This table allows WAN side packets addressed for specific IP ports to be routed to a specified address on the LAN side.

Of Local Address – Used to specify the LAN side address of the routing operation.

TCP – Route TCP/IP traffic

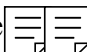
UDP – Route UDP/IP traffic

Enable – Activate this routing setting

Advertise This Service – Display this named service for WAN users

With Title – The name assigned to this service



Figure 

4.3.3 Admin Screen Services

This service allows the user to control overall local and remote administrative access.

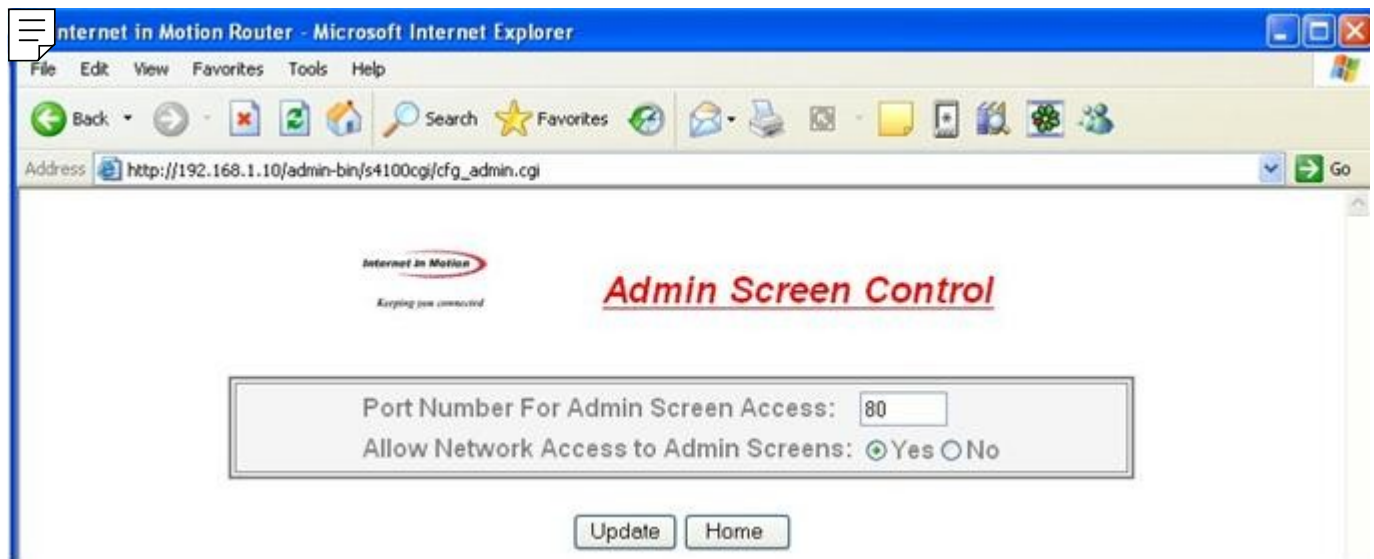
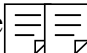


Figure 

Port Number For Admin Screen Access – Causes the WAN side web server to listen on a port other than the default of Port 80.

Allow Network Access To Admin Screens – If set to Yes administrative users will be able to connect to Cellular Router 's Admin interface over the 1XRTT network connection. If this selection is set to No only local administration is possible.

4.3.4 Over The Air (OTA) Programming

Almost all CDMA2000 networks employ one form or another of OTA to refresh Preferred Roaming Lists (PRL) and to make other programmatic changes to the firmware associated with the wireless interface. Some networks have streamlined the entire process into a single command that performs the activation and downloads the required data files. In other cases a series of command steps are required to do a complete activation. The OTA programming function allows you to enter the required short codes to accomplish Over The Air Programming on the network that you are using. Any single command line can be entered on the OTA screen. This command line will be sent directly to the CDMA radio and from there to the wireless network. The OTA screen will display a single line of response from the network. IIM publishes TechNotes on the activation procedures for different networks.

Note – Before using the OTA screen, you must:

- Go to the Wireless Interface Screen and disable the WAN interface of your Cellular Router .
- Perform a Restart of your Cellular Router .

These steps terminate any packet or circuit connection with the network so that OTA operations may take place with no interference. Once the OTA programming is completed you will need re-enable the WAN interface and restart your Cellular Router to re-establish network connections.

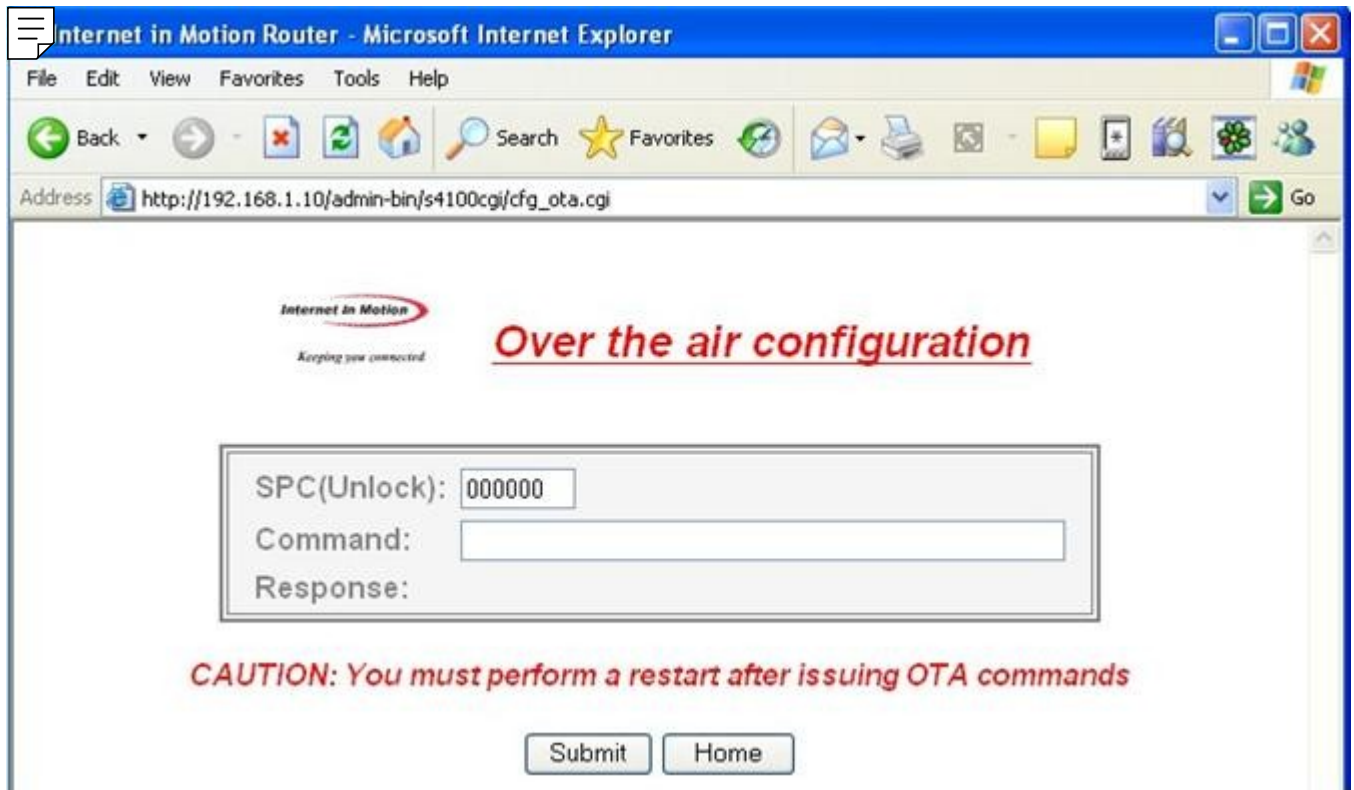
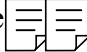


Figure 

SPC (Unlock) – Required for OTA on some networks. Consult IIM’s Activation TechNotes for specifics.

Command – Enter network specific OTA commands in this field. Consult IIM’s Activation TechNotes for specifics.

Response – Network responses to OTA commands. Consult IIM’s Activation TechNotes for specifics.


4.4 Status

4.4.1 Wireless Status

This status screen provides information about the wireless interface such as ESN and MIN that will be

needed if you are having problems with the wireless network. Signal level can also be used to validate antenna placement. Information on this status screen originates either from the Wireless network or from the CDMA/1XRTT radio within Cellular Router .



Figure 

ESN – An identifier assigned to the CDMA radio for this Cellular Router . The value is given in decimal (Dec) and Hexidecimal (Hex).

System ID (SID) – Numeric Identifiers assigned to local market areas within a wireless network. Your wireless network operator may request this information if you are having trouble connecting to the network.

Telephone Number (MIN) – The circuit side phone number of the CDMA radio in your Cellular Router . MIN stands for Mobile Identification Number.

Network Status – Either In Service or Out of Service. Indicates the state of the network as seen through your particular Cellular Router .

Signal Level (RSSI) – A measure of the strength of the wireless signal that your Cellular Router is currently seeing. A larger negative number indicates a marginal network connection.

Roam Status – Indicates the network's view of the current geographic location of your Cellular Router. The possibilities are Not Roaming (Home), Roaming, or Blink Roaming. An indication of Roaming may or may not impact your data transmission costs. Charges are a function of your rate plan, not necessarily linked to the network's notion of roaming. Note also that Off Network Roaming is not supported by most 1XRTT packet networks today but may be in the future.

Current IP Address – If the Current Status field is Active this is the IP address that the wireless network has assigned to your Cellular Router during this registration. If Current Status is inactive this is the last IP address assigned.

Call Type – Text provided by the wireless network indicating the type of call that is in progress.

No Call In Progress

Circuit Switched – A Circuit Switched Data (CSD) call has been established

Packet – Relay Model - 1XRTT packet call using IP services provided by the endpoint

Packet – Network Model - 1XRTT packet call using IP services provided by the network

Packet – Mobile IP – Advanced packet type call supporting roaming and handoff

Call Status – Indicates the current status of network registration

Idle - - Not registered (disconnected)

Connected – Registered and active on the network


Dormant – Registered but inactive

Ended – The current call has been terminated

4.4.2 Ethernet Status

Indicates the current LAN side IP address that the Cellular Router is using. MAC Address is a vendor and machine specific identification code.



Figure 

5 Specifications

Controller

Axis Etrax 100LX MCM 2+8

Linux 2.4

Interfaces

Four Port Ethernet Switch - RJ45 Ethernet 10/100baseT Full or Half Duplex auto polarity sensing

Relay Input Interface - Designed to detect closure or opening of relay contacts.

Physical – 2 Pin Terminal Block

Electrical – Self-powered, current limited loop senses state of relay contacts. No external power required.

Maximum cable length between Series 4100 and relay - 50 feet

Relay Output Interface

Physical – 2 Pin Terminal Block

Electrical – Self-powered 40ma @12VDC

Wireless Interface

CDMA2000/1XRTT

Physical – SMA Antenna (removable)

CDMA Approvals – Compliant with: IS-95, CDMA 2000 specifications. FCC: Part 22, 24 and 15.

Power Requirements

Standard - 12VDC \pm 10%.

115VAC -> 12VDC Wall Transformer included.

Power Consumption @12VDC nominal

CDMA Radio Off - 180ma

CDMA Radio On – Data Channel Inactive – 230ma

CDMA Radio On - 1 Ethernet Port Connected – 384ma

CDMA Radio On – 4 Ethernet Ports Connected – 445ma

Environmental

Operating temperature range: - 20C to +70C. Humidity: 90% non-condensing.

Physical

Dimensions: 5.275"L x 5.225"W x 2.08"H. Weight: 12oz.

Mounting – Self standing or wall mount

6 Certifications

FCC Part 15

This equipment has been tested and complies with the limits for a Class A computing device according to U.S. Code of Federal Regulations, Title 47, FCC Rules and Regulations Part 15. Operation is subject to the following two conditions:

- 1) This device may cause harmful interference, and
- 2) This device must accept any interference received, including interference that may cause undesired operation.

Test Report

FCC - Report # SC400074-06

Industry Canada - # SC400074-06A

Testing for compliance with Measurement Requirements (CFR 47 Part 22, Paragraph 22.917(b)(2) and Part 24, Paragraph 24.238(a))

FCC – Report # SC400074-03

Industry Canada – Report # SC400074-03A

WARNING: To reduce any possible hazard due to exposure of the human body to electromagnetic radiation, per FCC OET Bulletin 65, this device is approved for operation using the antenna provided. The antenna installation must provide a separation distance of 20 cm or more between the antenna and all persons to satisfy Maximum Permissible Exposure (MPE) compliance.